

Easy-to-use console

Easy to operate, fully functional, and comfortable to use



More professional detailing

Produced by Hangcha, Quality Guaranteed



NO.1 Foldable footboard

The operator can stand on the footboard to operate the forklift
Flexible and Efficient



NO.2 Reinforced transmission chain

High tensile strength reinforced transmission chain
Smooth and safe lifting and lowering



NO.3 Foldable arm

Protects the operator
More peace of mind when using



NO.4 Wire mesh fence

Installation of wire fencing for added safety assurance



Professional Service
at Your Side

ELECTRIC Warehouse Equipment



Mini Electric Pallet Truck II



Electric Pallet Truck



Rider Pallet Truck



Tiller Tractor



Electric Pallet Stacker



Counterbalanced Pallet Stacker



Electric Tractor



Reach Truck



Lithium-ion Battery Forklift Truck



Lithium-ion Battery Pallet Stacker



Lithium-ion battery Pallet Truck



ZHEJIANG HANGCHA GLOBAL SERVICE CO., LTD.

- Address: 666 Xiangfu Road, Hangzhou, Zhejiang, China[311305]
- Tel: +86-571-61112858
- Email: parts_cn@hcforklift.com

"Hangcha" and "HANGCHA," along with their combinations, are registered trademarks of Hangcha Group Co., Ltd. Any form of counterfeiting will be subject to legal sanctions.
To ensure product quality, please purchase vehicles, spare parts, and services from authorized channels.
Please contact the subsidiary of Hangcha Group Co., Ltd. or authorized dealerships nearby to obtain updated information regarding products and services. Hangcha Group Co., Ltd. holds the copyright for all materials.
Specifications are subject to change without prior notice, and the photos are for reference only.



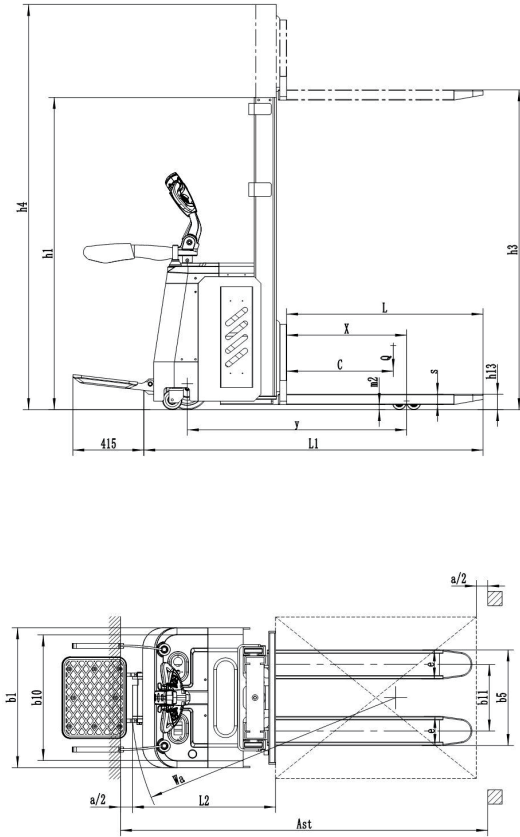
1.5t/2.0t Stand-on Electric Pallet Stacker



ZHEJIANG HANGCHA GLOBAL SERVICE CO., LTD.

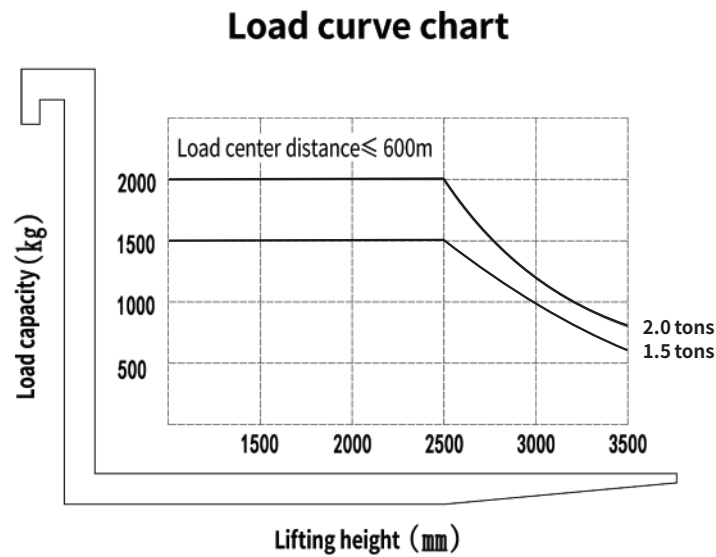
Product parameters

Overview	Model/Configuration No.	/	CDD15-WH	CDD20-WH
	Operation mode	/	Stand-up type	Stand-up type
	Rated load capacity	Q (kg)	1500	2000
	Load center distance	c (mm)	600	600
	Wheelbase	y (mm)	1150	1290
Weight	Net weight (including the battery)	kg	675	860
	Tire material	/	Polyurethane	Polyurethane
Wheels & Tires	Driving wheel size/Qty.	mm	Φ210×75/1	Φ250×80/1
	Load-bearing wheel size/Qty.	mm	Φ80×70/4	Φ80×70/4
	Auxiliary wheel size/Qty.	mm	Φ115×55/2	Φ115×55/2
	Wheel track - front	b10 (mm)	655	655
	Wheel track - rear	b11 (mm)	510	510
Dimensions	Lift height	h3 (mm)	3000	3000
	Min. height of forks	h13 (mm)	90	90
	Overall length	L1 (mm)	1865	2000
	Overall width	b1 (mm)	820	820
	Fork dimensions	s×e×L (mm)	60×170×1150	60×170×1150
	Outer width of the forks	b5 (mm)	680	680
	Min. ground clearance	m2 (mm)	30	30
	Min. right angle aisle width 1,000*1,200 (1,200 straddle forks)	Ast (mm)	2070	2215
	Min. right angle aisle width 800x 1200 (1,200 along forks)	Ast (mm)	2120	2265
	Minimum turning radius	Wa (mm)	1420	1565
Performance	Driving speed (full-load/no-load)	km/h	3.8/4.2	4.5/5.0
	Lifting speed (full-load/no-load)	mm/s	85/135	75/135
	Lowering speed (full-load/no-load)	mm/s	120/120	120/120
	Max. gradeability (full-load/no-load)	%	3/6	5/10
Motors & Batteries	Driving motor power	kW	0.75	1.5
	Lifting motor power	kW	2.2	2.2
	Battery voltage/capacity	V/Ah	24/90	24/120
Others	Controller	/	DC	AC



Optional parameters for the mast

Rated load capacity	Specification model Mast lifting height	Lowered height of mast	Extended height of mast	Highest point with maximum payload capacity (load center distance 600)
kg	mm	mm	mm	kg
1500	2000	1495	2495	1500
	2500	1745	2995	1500
	3000	1995	3495	1000
	3500	2245	3995	600
2000	2000	1495	2495	2000
	2500	1745	2995	2000
	3000	1995	3495	1200
	3500	2245	3995	800



Product detail

